

Model W100



SMART WI-FI SPEAKER

PLAY YOUR MUSIC, IN ANY ROOM, AT ANY TIME

POWERED BY (iQ) Qualcomm® AllPlay™



Full range stereo sound perfect for: Kitchen, Dining Room and Office

SMART WI-FI SPEAKER

PLAY YOUR MUSIC, IN ANY ROOM, AT ANY TIME



- Free Hitachi Wi-Fi Speaker App.*
- Stream music using Spotify, Rhapsody, and many more!
- Designed to provide High Performance audio.
- Bluetooth® Re-Streaming over Wi-Fi
- Powered by the Qualcomm® Allplay™ Smart Media Platform
- Wi-Fi streaming for ultra clear signal.
- Bluetooth® 4.0
- NFC™ for Bluetooth Connection
- Aux In (3.5mm)
- 12 Watt Total System Power
- 2 x 2.75" Full range drivers
- 1 x 1" Tweeter

Stream the same music throughout your home.

Play a different song in each room with multiple speakers.

Control your speaker(s) using the free Hitachi Wi-Fi Speaker App.

Control your speakers simultaneously to fit your audio needs.

Bluetooth Compatible - Enjoy music using your favorite streaming services such as iHeartRadio and Pandora from your mobile device.



1 Start with any AllPlay powered Hitachi speaker

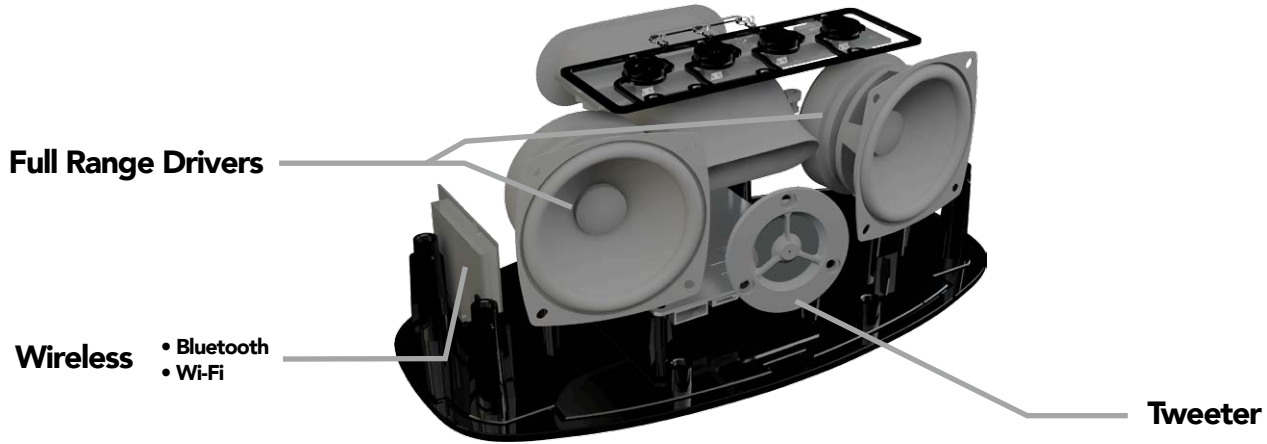


2 Connect to your Wi-Fi network using the free Hitachi Wi-Fi Speaker App

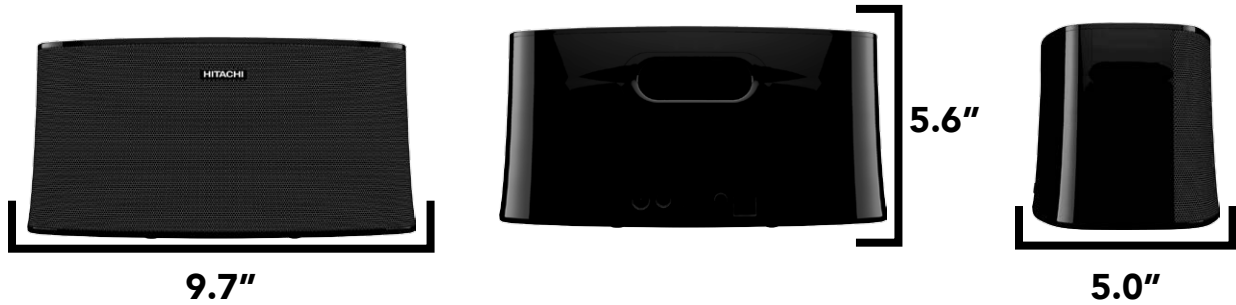


3 Enjoy in every room, in perfect sync

Inside The Speaker:



Speaker Dimensions Model W100



Unit Dimension without Packaging (inch)	9.7"	5.6"	5"
Unit Dimension without Packaging (mm)	247 mm	142 mm	127 mm
Individual Carton Dimensions (inch)	12.4"	6.77"	7.48"
Individual Carton Dimensions (mm)	315 mm	172 mm	190 mm
Master Carton Dimensions (inch)	26.45"	15.9"	16.14"
Master Carton Dimensions (mm)	672 mm	404 mm	410 mm
Qty Per Master Carton	8		

Unit Weight without Packaging	3.30
Individual Carton Weight	4.85
Master Carton Weight	38.8

Some third party music services accessible via Hitachi Wi-Fi Speaker App (e.g., Rhapsody, SomaFM, etc.) may require paid subscriptions to access some or all of their offered services. The Spotify free app can be used via the Hitachi Smart Wi-Fi Speaker's Bluetooth or AUX IN inputs. A Spotify Premium subscription is required to use Spotify over your Wi-Fi network. Spotify may not be available in all areas in which these speakers are sold and content availability and applicable charges are subject to change.

For any other audio sources that are not supported by Wi-Fi applications, connect to the Hitachi Smart Wi-Fi Speaker using its Bluetooth or AUX IN inputs.

Qualcomm® is a trademark of Qualcomm® Incorporated, registered in the United States, and other countries and used with permission. AllPlay™ and the AllPlay™ icons are trademarks of Qualcomm® Connected Experiences, Inc. and used with permission. The Bluetooth® word mark and logos are registered trademarks owned by Bluetooth SIG, Inc. All other trademarks and trade names are those of their respective owners.

Apple, iPhone, iPad are registered trademarks of Apple Inc., registered in the U.S. and other countries. Google Play and Android are registered trademarks of Google Inc.

The N Mark is a trademark or registered trademark of NFC Forum, Inc. in the United States and in other countries.

All other trademarks and trade names are those of their respective owners.