

SJ700 & SJ200 Series

VARIABLE FREQUENCY CRANE & HOIST DRIVES

Sensorless or Closed-Loop Vector Control



Intelligent Sensorless Vector Control



Two High-Performance General-Purpose Drive Families...

SJ200

Meet all the performance and safety requirements of crane and hoist systems using low cost, off-the-shelf drives.

Compact, high torque, full-featured microdrive, for applications up to 10 hp



- Hitachi award-winning iSLV (intelligent sensorless vector) technology, providing high starting torque of 200% or more at 1 Hz
- Advanced trip avoidance functions
- Built-in PLC-type logic and timing functions

MODEL LINEUP

Motor hp	200 V class	400 V class
1/4	SJ200-002NFU2	SJ200-002HFU2
1/2	SJ200-004NFU2	SJ200-004HFU2
1	SJ200-007NFU2	SJ200-007HFU2
2	SJ200-015NFU2	SJ200-015HFU2
3	SJ200-022NFU2	SJ200-022HFU2
5	SJ200-037LFU2	SJ200-040HFU2
7.5	SJ200-055LFU2	SJ200-055HFU2
10	SJ200-075LFU2	SJ200-075HFU2

...Two Drive Families to Help “Hoist Up” Your Profits!

SJ700

Both series are suited for all CMAA and HMI service classes for traverse and hoisting motion. Ideal for load brake and non-load brake hoists.



**Large capacity,
high torque drive
with a powerful
function set,** for
applications up to 10 hp

- Advanced vector control technology, providing high starting torque of 200% or more at 0.3 Hz
- Closed-loop capability with optional encoder feedback board
- Advanced trip avoidance functions
- Powerful on-board programmable controller functions

MODEL LINEUP

Motor hp	200 V class	400 V class
15	SJ700-110LFUF2	SJ700-110HFUF2
20	SJ700-150LFUF2	SJ700-150HFUF2
25	SJ700-185LFUF2	SJ700-185HFUF2
30	SJ700-220LFUF2	SJ700-220HFUF2
40	SJ700-300LFUF2	SJ700-300HFUF2
50	SJ700-370LFUF2	SJ700-370HFUF2
60	SJ700-450LFUF2	SJ700-450HFUF2
75	SJ700-550LFUF2	SJ700-550HFUF2
100	-	SJ700-750HFUF2
125	-	SJ700-900HFUF2

Bridge Crane Control & Power Distribution Panels

HBC Series

Pre-engineered panels are available for fast delivery. SJ200 bridge axis inverter is built in – complete crane control systems can be developed quickly & easily.

Standard design bridge control panel includes features to meet most application requirements

- 1 – 10 hp, 230 VAC and 460 VAC
- Hitachi SJ200 crane & hoist inverter built in for bridge axis
- 30 – 100 A supply power at rated voltage for hoist/trolley axes
- Lockable through-door disconnects
- Main contactor same rating as disconnect
- Fuse or circuit breaker models available
- Fusible, touch-safe branch circuit protection
- NEMA 1 standard rating (16"W x 31" W x 10" D)
- NEMA 3R, 4, 4X, 12 and 13 optionally available
- Brake contactor included
- 150 VA control power transformer
- Internally mounted dynamic braking resistor
- Individual motor overloads
- DIN-rail mounted termination strip
- Configurable for custom requirements



STANDARD PANEL DESIGN INCLUDES:

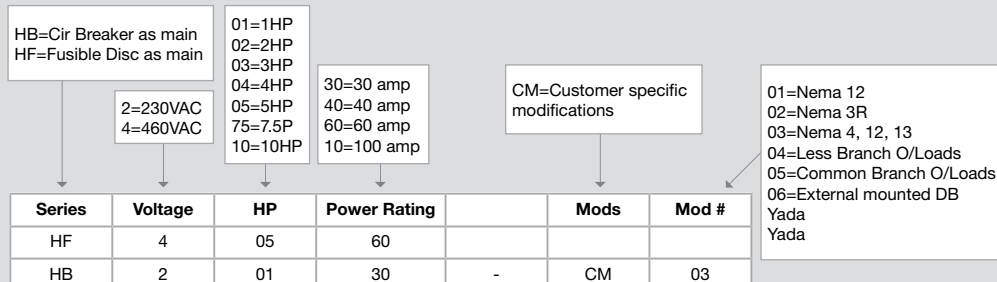
Nema 1 enclosure 16" x 31" x 10"D	Fusible, Touchsafe Branch Circuit Protection
Fusible or Breaker Through Door Disconnect	Individual Motor Overloads
Main Contactor Sized Same as Disconnect	150VA Control Transformer
Braking Contactor	Din Rail Mounted Termination Strip
Hitachi SJ200 Bridge Crane Drive	Internally Mounted DB Resistor

PART NUMBERS FOR BASE MODELS

230VAC		
Description	Fused Disconnect	Breaker Disconnect
30A, 1HP	HF2-0130	HB2-0130
30A, 2HP	HF2-0230	HB2-0230
30A, 3HP	HF2-0330	HB2-0330
40A, 2HP	HF2-0240	HB2-0240
40A, 3HP	HF2-0340	HB2-0340
40A, 5HP	HF2-0540	HB2-0540
60A, 2HP	HF2-0260	HB2-0260
60A, 3HP	HF2-0360	HB2-0360
60A, 5HP	HF2-0560	HB2-0560
60A, 7.5HP	HF2-7560	HB2-7560
60A, 10HP	HF2-0160	HB2-1060
100A, 5HP	HF2-0510	HB2-0510
100A, 7.5HP	HF2-7510	HB2-7510
100A, 10HP	HF2-1010	HB2-1010

480VAC		
Description	Fused Disconnect	Breaker Disconnect
30A, 1HP	HF4-0130	HB4-0130
30A, 2HP	HF4-0230	HB4-0230
30A, 3HP	HF4-0330	HB4-0330
40A, 2HP	HF4-0240	HB4-0240
40A, 3HP	HF4-0340	HB4-0340
40A, 5HP	HF4-0540	HB4-0540
60A, 2HP	HF4-0260	HB4-0260
60A, 3HP	HF4-0360	HB4-0360
60A, 5HP	HF4-0560	HB4-0560
60A, 7.5HP	HF4-7560	HB4-7560
60A, 10HP	HF4-0160	HB4-1060

Hitachi America Bridge Crane Control & Distribution Panel Part No. Diagram



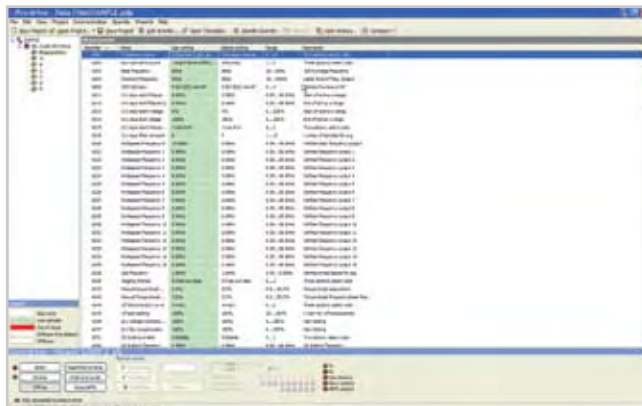
EXAMPLES	Part Number	Description
	HF40560	Basic Package, 460V, 5HP, 60A power capacity, Nema 1 enclosure with thru door fusible disconnect
	HB20130-CM03	Basic Package, 230V, 1HP, 30A power capacity in Nema 4, 12, & 13 enclosure with thru door circuit breaker disconnect

Both series are empowered for crane & hoist service by means of a unique Hitachi pendant interface board that

- converts 115 VAC pendant signals to DC, and
- performs necessary interface logic functions
- can be customize to OEM requirements



HITACHI inverters feature easy programming via the removable standard keypad, or using the advanced PC-based ProDrive software.



HITACHI inverters conform to global standards and are environmentally friendly, meeting RoHS standards



For more information, contact:

Hitachi America, Ltd.

Industrial Sales Division, 50 Prospect Avenue, Tarrytown, NY 10954

262.787.4975 914.524.6663 inverterinfo@hal.hitachi.com