

HITACHI PROJECTOR NETWORK TOOLS

HITACHI
Inspire the Next



HITACHI NETWORK PROJECTOR ADVANTAGES

Hitachi Network Projectors offer versatile, embedded networking capabilities. When combined with applications from the **Hitachi Projector Tools Suite**, AV/IT managers are able to create efficient and cost-effective projector management systems.



Anti-Theft

When using a Hitachi Networked Projector, an email alert can be immediately sent to an administrator if the projector has been disconnected.



Campus Notification System (CNS)

Using Hitachi's proprietary My Image feature, allows administrators to take control and display pre-stored images from each projector on the network. In addition, Hitachi's Projector Messenger Application* ("PJMessenger") software allows an administrator to send real-time (or stored) text messages that appear on the screen of the projector.

This is great for sending campus wide announcements and important notifications.

When used in conjunction with the scheduling function, notifications can be shown at preset times, making each screen a virtual message board.



Built-in Networking

All Hitachi Network Projectors have embedded HTML pages - that allow you to access, control, schedule events and arrange e-mail notifications via a web browser. This means that you can access any projector on the network - from any location on the network - regardless of your physical location.



Easy Scheduling

Administrators can conveniently schedule a variety of events - including Power On/Off - for multiple projectors at the same time.



IT/Configuration Friendly

Hitachi Network Projectors are very IT friendly. DHCP, DNS & Infrastructure enabled, SNMP compliant with enhanced security features.



Centralized Reporting

Hitachi's Projector Management Application ("PJMan") software can produce real-time and accumulated status reports as well as individual projector logs.



Maintenance

E-mail alerts can be sent to notify administrators when reactive and routine maintenance is necessary.



Monitoring

Using **PJMan**, an AV/IT Administrator can monitor the current status of an individual or multiple sets of projectors; from a single location.



Share Content*

With a projector network in place, users can use their laptop to send content to any network projector*, allowing multiple presenters to share content.



Control

With Hitachi **PJMan**, an administrator can control the functions of each projector over a LAN connection. In addition, Hitachi's Projector Control Application ("PJCtrl") software, provides users with a 'Toolbar' on their PC desktop (as an alternative to a physical remote).

Hitachi's **Projector Management Software** (PJMan) provides you the ability to control, diagnose & manage an individual or group of Hitachi projectors.

PJMan's advanced e-mail, report and scheduling capabilities help you to make the most of your investment.

- Projector Management**
- Monitor & Diagnose the status of an individual or group of Hitachi Network Projectors.
 - Search, sort, view and share projector data via specific criteria.
 - Group and sub-group to suite your individual needs and preferences.

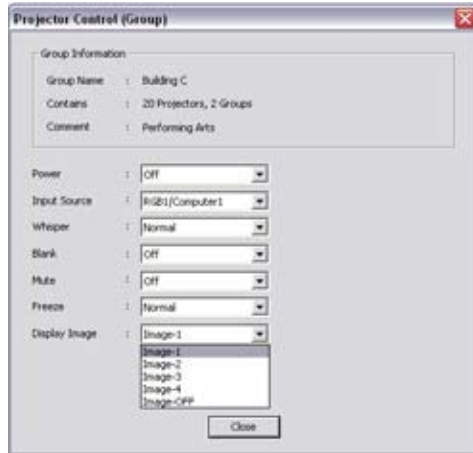
The screenshot shows the 'Projector Management Application' window. On the left is a tree view of projectors organized by building (A, B, C, D) and room. The main area displays a table of projector data. Below the table is a 'Schedule List' for 'Projector (Building C) Class Rooms/'.

Projector Name	Model	Connection	Power	Input	Status	Lamp Time	Filter Time	Total Run Time
Room G10003	CP-A100	127.0.0.1:10003	ON	Video	Normal	734 h	32 h	2203 h
Room G10004	CP-A100	127.0.0.1:10004	ON	Video	Normal	949 h	103 h	2009 h
Room G10005	CP-A100	127.0.0.1:10005	ON	Computer I	Normal	1080 h	937 h	1880 h
Room H10016	CP-A100	127.0.0.1:10016	ON	Computer I	Normal	2862 h	1686 h	1776 h
Room H10017	CP-A100	127.0.0.1:10017	STANDBY	Computer I	Normal	131 h	680 h	2014 h
Room H10018	CP-A100	127.0.0.1:10018	ON	Video	Normal	2347 h	620 h	192 h
Room I10019	CP-X2010N	127.0.0.1:10019	STANDBY	S-Video	Normal	351 h	971 h	328 h
Room I10020	CP-X2010N	127.0.0.1:10020	ON	Computer in1	Normal	2035 h	1595 h	1742 h
Room I10021	CP-X2010N	127.0.0.1:10021	STANDBY	Video	Normal	2387 h	1756 h	115 h
Room J10022	CP-X2010N	127.0.0.1:10022	ON	Computer in1	Normal	2632 h	2639 h	2123 h
Room J10023	CP-X2010N	127.0.0.1:10023	STANDBY	Video	Normal	2504 h	2911 h	2676 h
Room J10024	CP-X2010N	127.0.0.1:10024	ON	Computer in1	Normal	1109 h	2071 h	1025 h
Room K10025	CP-X2010N	127.0.0.1:10025	Disconnected					
Room K10026	CP-X2010N	127.0.0.1:10026	STANDBY	S-Video	Normal	1214 h	20 h	1051 h
Room K10027	CP-X2010N	127.0.0.1:10027	STANDBY	Video	Normal	1265 h	2544 h	1002 h
Room L10028	CP-X2010N	127.0.0.1:10028	ON	Computer in1	Normal	1374 h	564 h	2313 h
Room L10029	CP-X2010N	127.0.0.1:10029	STANDBY	S-Video	Normal	2708 h	1498 h	1823 h
Room L10030	CP-X2010N	127.0.0.1:10030	STANDBY	Computer in1	Normal	439 h	1294 h	971 h

Schedule List: 5/27/2009 4:25:40 PM
 Projector (Building C) Class Rooms/

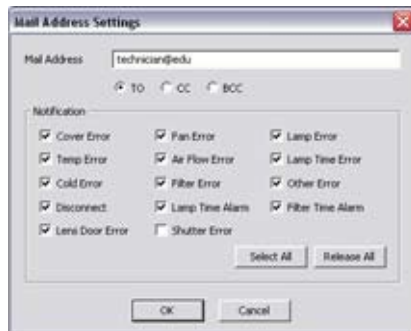
Date	Time	Control
Daily	15:15	Power OFF
Daily	08:15	Display Image-1
Daily	09:05	Input P:G11/Computer I
Daily	09:00	Power ON

Projector Control



Control the functions of an individual or group of Hitachi Network Projectors.

eMail Alerts



Receive eMail notifications for routine and reactive maintenance needs.

Reporting

Date: 5/28/2009 12:46:41 PM
Projector/Building C/

Projector Name	Model	Connection	Power	Input	Status	Lamp Time	Filter Time	Total Run Time
Class Rooms								
Labs								

Projector/Building C/Class Rooms/

Projector Name	Model	Connection	Power	Input	Status	Lamp Time	Filter Time	Total Run Time
Room G10003	CP-A100	127.001.1.0003	ON	I-Video	Normal	1421 h	2139 h	2778 h
Room G10004	CP-A100	127.001.1.0004	STANDBY	Video	Normal	617 h	617 h	1234 h
Room G10005	CP-A100	127.001.1.0005	STANDBY	Computer1	Normal	454 h	2255 h	2709 h
Room H10016	CP-A100	127.001.1.0016	ON	Computer1	Normal	634 h	1204 h	1838 h
Room H10017	CP-A100	127.001.1.0017	ON	Computer1	Normal	2098 h	2876 h	4974 h
Room H10018	CP-S2010N	127.001.1.0018	ON	Computer (a)	Normal	1047 h	146 h	1193 h
Room I10019	CP-S2010N	127.001.1.0019	STANDBY	I-Video	Normal	451 h	1709 h	2160 h
Room I10020	CP-S2010N	127.001.1.0020	STANDBY	Video	Normal	412 h	1212 h	1624 h
Room I10021	CP-S2010N	127.001.1.0021	STANDBY	Video	Normal	1206 h	1110 h	2316 h
Room J10022	CP-S2010N	127.001.1.0022	STANDBY	I-Video	Normal	1100 h	1229 h	2329 h
Room J10023	CP-S2010N	127.001.1.0023	STANDBY	Video	Normal	2879 h	386 h	3265 h
Room J10024	CP-S2010N	127.001.1.0024	STANDBY	I-Video	Normal	190 h	814 h	1004 h
Room K10025	CP-S2010N	127.001.1.0025	ON	I-Video	Normal	121 h	121 h	242 h
Room K10026	CP-S2010N	127.001.1.0026	ON	I-Video	Normal	124 h	1055 h	1179 h
Room K10027	CP-S2010N	127.001.1.0027	STANDBY	I-Video	Normal	141 h	1412 h	1553 h
Room L10028	CP-S2010N	127.001.1.0028	STANDBY	I-Video	Normal	2087 h	2063 h	4150 h
Room L10029	CP-S2010N	127.001.1.0029	ON	Video	Normal	181 h	1111 h	1292 h
Room L10030	CP-S2010N	127.001.1.0030	STANDBY	I-Video	Normal	465 h	1424 h	1889 h

Projector/Building C/Labs/

Projector Name	Model	Connection	Power	Input	Status	Lamp Time	Filter Time	Total Run Time
CP-S2010N SMP1003	CP-S245	127.001.1.0012	STANDBY	Hi8/1	Normal	1177 h	178 h	1355 h
Dr. Row CP-S251	CP-S255	127.001.1.0011	STANDBY	Video	Normal	567 h	2309 h	2876 h

Produce, share and analyze real-time projector status and usage reports.

Scheduling



Schedule events for an individual or group of Hitachi projectors.

PJMan supports networking of Hitachi Projectors via:

- Direct Ethernet connection
- 802.11 b/g wireless connection
- Direct RS-232C connection
- An external Ethernet to Serial device



Hitachi's **Projector Control Application** (PJCtrl) allows a user to control the functions of their Hitachi Projector via a 'Toolbar' on their desktop or laptop PC.

Since all of the functions for controlling the projector are on the PC, PJCtrl can help to reduce costs associated with lost remote controls, battery replacement, etc...



PJMan supports networking of Hitachi Projectors via:

- Local & Simple Control
 - Alternative to the remote
 - Save costs for batteries, replacement remotes, etc...
 - Supports all Hitachi models
 - Via LAN and / or RS-232
 - Power / Input / Volume / Blank / Mute / etc...
 - Customize Input Labels
 - Control up to five of same model type at the same time

Projector Setup Tool

Projector Name	Model Name	DWP	IP Address	Subnet Mask	Default Gateway	Computer1	MEM1	Computer2	Connect
MASTER PROJECTOR	CP-W9325	OFF	192.168.1.1	255.255.255.0	192.168.1.254	Computer	DVD	Doc. Camera	Cable Feed
Room 101	CP-W9325	OFF	192.168.1.2	255.255.255.0	192.168.1.254	Computer	DVD	Doc. Camera	Cable Feed
Room 102	CP-W9325	OFF	192.168.1.3	255.255.255.0	192.168.1.254	Computer	DVD	Doc. Camera	Cable Feed
Room 103	CP-W9325	OFF	192.168.1.4	255.255.255.0	192.168.1.254	Computer	DVD	Doc. Camera	Cable Feed
Room 104	CP-W9325	OFF	192.168.1.5	255.255.255.0	192.168.1.254	Computer	DVD	Doc. Camera	Cable Feed
Room 105	CP-W9325	OFF	192.168.1.6	255.255.255.0	192.168.1.254	Computer	DVD	Doc. Camera	Cable Feed
Room 106	CP-W9325	OFF	192.168.1.7	255.255.255.0	192.168.1.254	Computer	DVD	Doc. Camera	Cable Feed
Room 107	CP-W9325	OFF	192.168.1.8	255.255.255.0	192.168.1.254	Computer	DVD	Doc. Camera	Cable Feed
Room 108	CP-W9325	OFF	192.168.1.9	255.255.255.0	192.168.1.254	Computer	DVD	Doc. Camera	Cable Feed
Room 109	CP-W9325	OFF	192.168.1.10	255.255.255.0	192.168.1.254	Computer	DVD	Doc. Camera	Cable Feed
Room 110	CP-W9325	OFF	192.168.1.11	255.255.255.0	192.168.1.254	Computer	DVD	Doc. Camera	Cable Feed
Room 201	CP-W9325	OFF	192.168.1.12	255.255.255.0	192.168.1.254	Computer	DVD	Doc. Camera	Cable Feed
Room 202	CP-W9325	OFF	192.168.1.13	255.255.255.0	192.168.1.254	Computer	DVD	Doc. Camera	Cable Feed
Room 203	CP-W9325	OFF	192.168.1.14	255.255.255.0	192.168.1.254	Computer	DVD	Doc. Camera	Cable Feed
Room 204	CP-W9325	OFF	192.168.1.15	255.255.255.0	192.168.1.254	Computer	DVD	Doc. Camera	Cable Feed
Room 205	CP-W9325	OFF	192.168.1.16	255.255.255.0	192.168.1.254	Computer	DVD	Doc. Camera	Cable Feed
Room 206	CP-W9325	OFF	192.168.1.17	255.255.255.0	192.168.1.254	Computer	DVD	Doc. Camera	Cable Feed
Room 207	CP-W9325	OFF	192.168.1.18	255.255.255.0	192.168.1.254	Computer	DVD	Doc. Camera	Cable Feed
Room 208	CP-W9325	OFF	192.168.1.19	255.255.255.0	192.168.1.254	Computer	DVD	Doc. Camera	Cable Feed
Room 209	CP-W9325	OFF	192.168.1.20	255.255.255.0	192.168.1.254	Computer	DVD	Doc. Camera	Cable Feed
Room 210	CP-W9325	OFF	192.168.1.21	255.255.255.0	192.168.1.254	Computer	DVD	Doc. Camera	Cable Feed
Room 301	CP-W9325	OFF	192.168.1.22	255.255.255.0	192.168.1.254	Computer	DVD	Doc. Camera	Cable Feed
Room 302	CP-W9325	OFF	192.168.1.23	255.255.255.0	192.168.1.254	Computer	DVD	Doc. Camera	Cable Feed
Room 303	CP-W9325	OFF	192.168.1.24	255.255.255.0	192.168.1.254	Computer	DVD	Doc. Camera	Cable Feed

Hitachi's **Projector Setup Tool** (PJSetup) is a software application that allows you to pre-configure common and sequential settings for a fleet of projectors on the PC – and then copy them to the projector. PJSetup can also copy the settings of a “master” projector and then make ‘clones’ of additional projectors.

PJSetup can help you to save time and resources when deploying multiple projectors.



Master Projector

Configuration Data



RS232





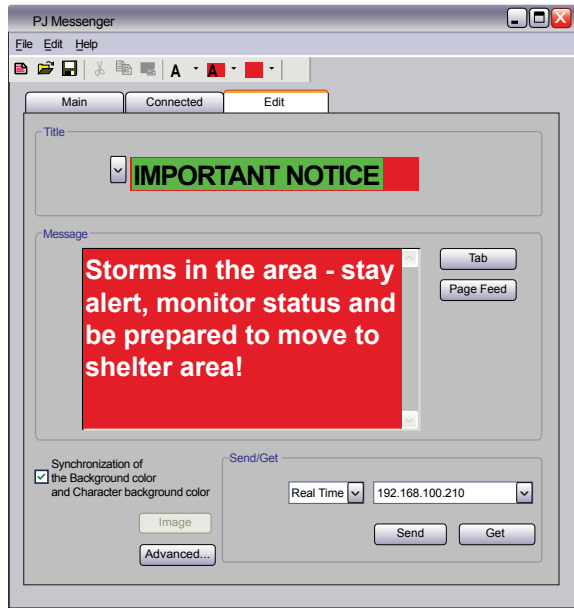
Hitachi's Software Application, **Projector Image Tool** (PJImg) allows you to transfer images across a LAN to your 'My Image' enabled Hitachi Network Projector*.

The image is then stored in the projector and is displayed using the 'My Image' feature of your Hitachi Network Projector. The projector can store four separate 'My Image' images that can be recalled / displayed using the projector's remote control, embedded html pages, Hitachi's PJCtrl application or Hitachi's PJMan application.

- 'My Image' is great for:**
- Sending your presentation images ahead to the projector (so you can leave your computer behind)
 - Sending morning announcements to rooms on campus
 - Sending important notifications or emergency instructions



*Specific models only



Hitachi's **Projector Messenger Application** (PJMessenger) allows you to take control and display real-time text messages on your projector screen*.

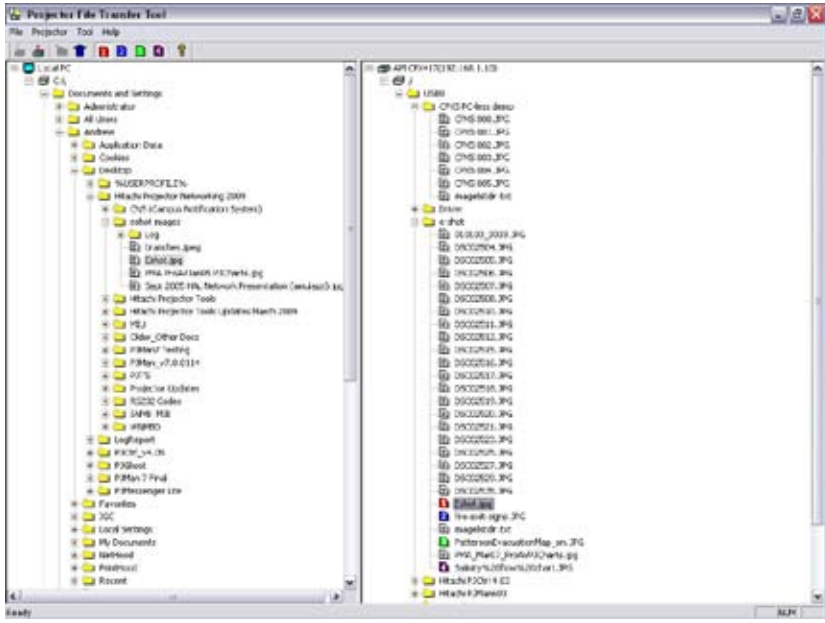
These text messages can be shown as a scrolling message (or 'scrawl') across the bottom of your screen (just like the TV news), or directly in the middle of the screen for more urgent messages.



LAN

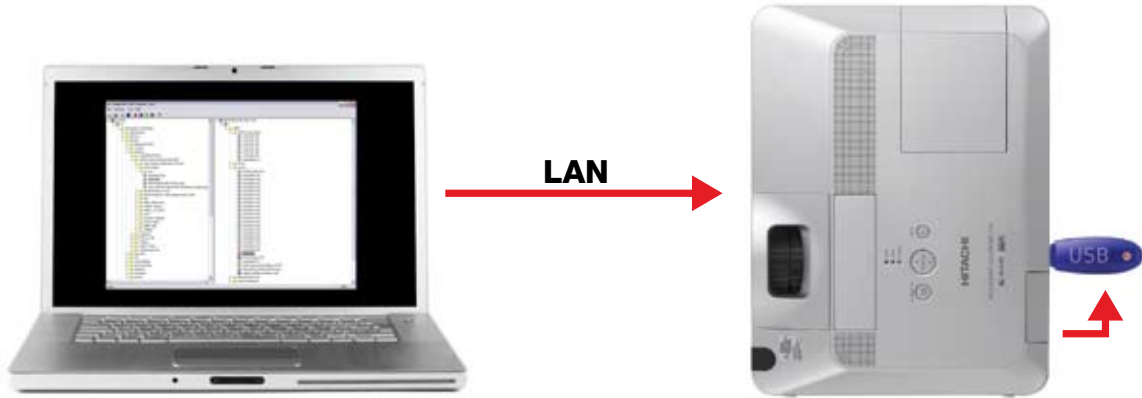


*Specific models only



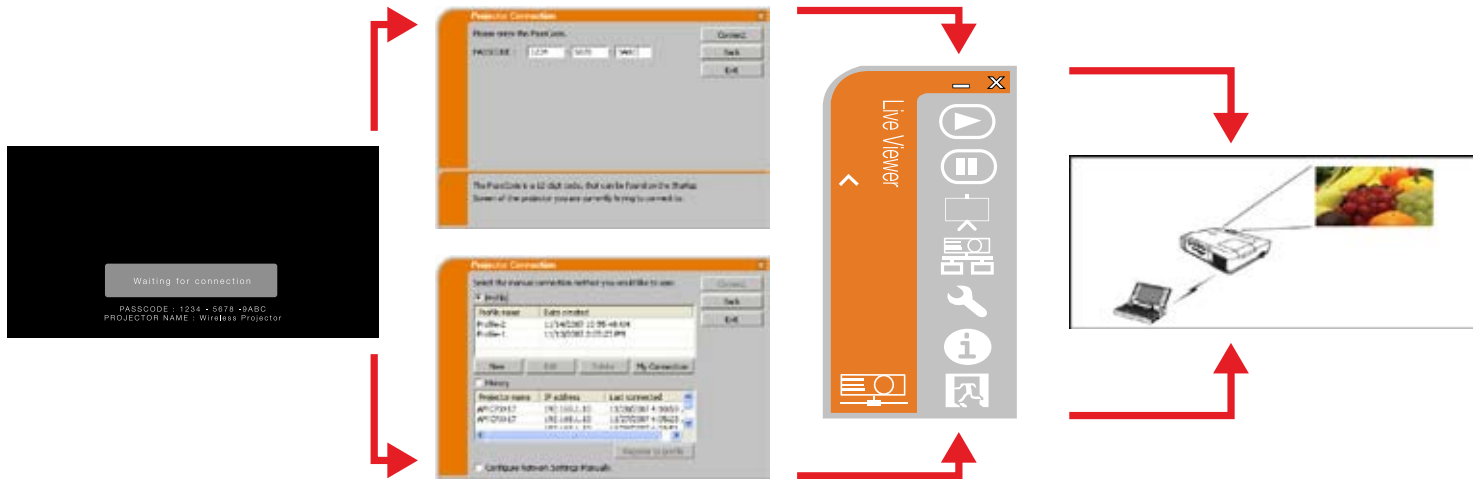
Hitachi's Software Application, **Projector File Transfer Tool** (PJTransfer) allows you to transfer and manage files across your LAN to an external or embedded memory device for playback with your MIU enabled Hitachi Network Projector*.

- Files are transferred and then stored in either:
- USB storage device connected to the USB port of your Hitachi Network Projector
 - An SD Memory Card inserted in the SD Card slot of your Hitachi Network Projector



*Specific models only

Hitachi's **LiveViewer 3** application allows a user to capture and send images from their PC over a Wired / Wireless LAN, to be displayed on their Hitachi Network Projector.



Benefits of the new & improved LiveViewer software include:

- MS Vista Compatibility
- Quick Connection Wizard via:
 - Passcode*
 - Profile
 - History
- Redesigned Graphical User Interface
- Display images from multiple PC's (up to 4)
- Presenter Mode
- Display User Name
- ADHOC & Infrastructure Modes

HITACHI PROJECTOR NETWORK TOOLS

